

PRECISION SURFACES INTERNATIONAL
APPLICATION GUIDE FOR SECTIONING



CK260A



CK260B

PRECISION

ABRASIVE

Z AXIS



PRECISION SURFACES INTERNATIONAL, INC.
922 Ashland St.
Houston, Texas, 77008 USA

(713) 426-2220
info@psidragon.com
www.psidragon.com
www.psimetallography.com

APPLICATION GUIDE-*SECTIONING*

PRECISO CL PRECISION SERIES

- CL-40, Low Speed Diamond Saw
Page 3
- CL-50, High Speed Precision Saw
Page 4
- CL-70C, Manual Cutter, Intuitive Control
Page 5
- CLM-50, Laser Guided Precision
Page 6



ALTOCUT SERIES ABRASIVE CUTTERS

- CK Line of Cutters
Page 7
- CF Series
Page 8



APPLICATION GUIDE-SECTIONING

CL-40 Low Speed Diamond Saw

The PRECISO C-40 Low Speed Diamond Saw is perfect for applications requiring the cutting of materials with no deformation or burning. The CL-40 is easy to use, easy to clean. Built in coolant reservoir keeps the sample lubricated throughout the cutting process. Comes with 4" diamond wafering blade, coolant and a one year warranty on all parts and labor.



SPECIFICATIONS

- MOTOR POWER 40W
- MAX DIAMETER CUT 40mm (1 1/2")
- BLADE SIZE 3"-5"
- LOAD PRESSURE 0-400 g
- CUTTING METHOD Gravity Feed
- ROTATIONAL SPEED 0-400rpm
- COOLANT TANK 400 ml (16 oz.)

RECOMMENDED CONSUMABLES

- 3" High concentration wafering blade PSI-140-3
- 3" Low concentration wafering blade PSI-141-3
- 4" High concentration wafering blade PSI-140-4
- 4" Low concentration wafering blade PSI-141-4
- 5" High concentration wafering blade PSI-140-5
- 5" Low concentration wafering blade PSI-141-5
- Cutting oil, Quart PSI-150-1



APPLICATION GUIDE-SECTIONING

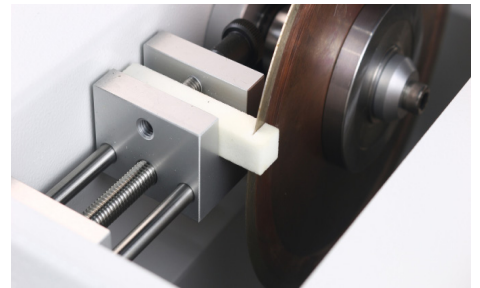
CL-50 High Speed Precision Saw

The PRECISO CL-50 High Speed Precision Saw is for applications requiring the cutting of materials where no deformation or burning is acceptable. Speed adjustable from 0-2000rpm allows great operator flexibility. Built in coolant reservoir keeps the sample lubricated throughout the cutting process. Easy to use dressing system lets the blade remain clean for better sectioning. Comes with 4" diamond wafering blade, coolant and a one year warranty on all parts and labor.



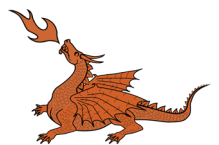
SPECIFICATIONS

- MOTOR POWER 120W (1/6hp)
- MAX DIAMETER CUT 50mm (2")
- BLADE SIZE 3"-7"
- LOAD PRESSURE 0-700 g
- CUTTING METHOD Rocker Arm
- ROTATIONAL SPEED 0-2000rpm
- COOLANT TANK 1 litre (32 oz.)



RECOMMENDED CONSUMABLES

- 3" High concentration wafering blade PSI-140-3
- 3" Low concentration wafering blade PSI-141-3
- 4" High concentration wafering blade PSI-140-4
- 4" Low concentration wafering blade PSI-141-4
- 5" High concentration wafering blade PSI-140-5
- 5" Low concentration wafering blade PSI-141-5
- Cutting oil, Quart PSI-150-1



APPLICATION GUIDE-*SECTIONING*

CL-70C Table Top Lab Saw



The PRECISO CL-70C Table Top Lab Saw is a manually operated cutoff machine, capable of using either diamond blades or abrasive cutoff wheels. The CL-70C is perfect for the metallographic lab with a small to medium volume of samples to be cut. The geared control wheel allows the user smooth control, and pinpoint accuracy when cutting. Comes complete with a set of vises and recirculating system.

SPECIFICATIONS

- MOTOR POWER 3hp
- MAX DIAMETER CUT 70mm
- CUTTING DEPTH 260mm
- BLADE SIZE 305mm
- ROTATIONAL SPEED 2500rpm
- COOLANT TANK 50L
- VOLTAGE 220V/3ph

RECOMMENDED CONSUMABLES

Very Hard Stock AlOx, rc60+, 12"x.093"x1.25" (305x2.4x32mm)	PSI-110-12
Hard Stock, AlOx, rc45-60, 12"x.093"x1.25" (305x2.4x32mm)	PSI-112-12
Medium Stock, AlOx, rc30-45, 12"x.093"x1.25" (305x2.4x32mm)	PSI-116-12
Soft Stock, AlOx, rc20-35, 12"x.063"x1.25" (305x1.6x32mm)	PSI-120-12
Ultra-thin, Delicate, AlOx 12"x.045"x1.25" (305x1.1x32mm)	PSI-114-12
Hard, Non-Ferrous, SiC 12"x.105"x1.25" (305x2.7x32mm)	PSI-111-12
Medium Non-Ferrous, SiC 12"x.105"x1.25" (305x2.7x32mm)	PSI-113-12
Soft Non-Ferrous, SiC 12"x.105"x1.25" (305x2.7x32mm)	PSI-115-12

Coolant/Rust Inhibitor, Ferrous, Quart PSI-166-1

Coolant/Rust Inhibitor, Non-Ferrous, Quart PSI-167-1



APPLICATION GUIDE-*SECTIONING*

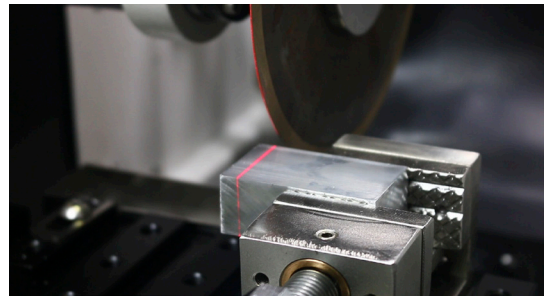
CLM-50 Table Top High Speed Precision Saw



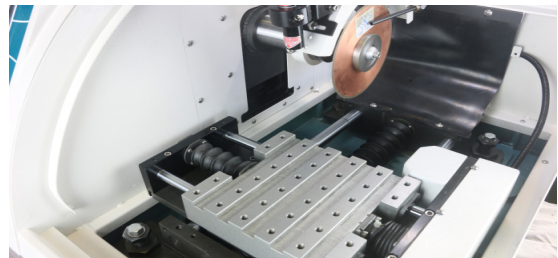
The PRECISO CLM-50 Table Top Lab Saw is an automatic, precision cutoff machine, with adjustable spindle speed from 500-5000rpm, and able to move in the X, Y and Z axis, creating tremendous flexibility. With laser guided precision cutting, and a variety of cutoff wheels and diamond blades, hard to cut parts requiring little or deformation can now be cut quickly and efficiently.

SPECIFICATIONS

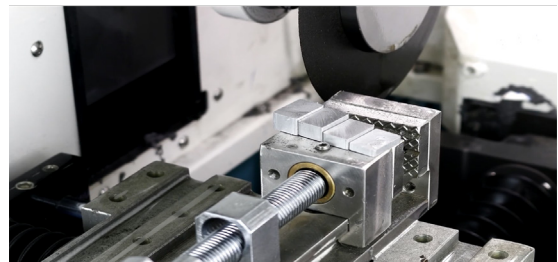
- Powerful 2 horsepower motor
- 200mm vise travel
- 50 mm cutting capacity (diameter)
- Uses 3"-8" cutoff wheel
- 500-5000rpm rotational speed
- 50mm spindle travel in Z axis
- Automatic overload protection
- 50L external recirculating tank



Precise Laser Guided Cutting



T-Slot Bed Allows Great Flexibility



Strong Screw-Type Clamping



APPLICATION GUIDE-*SECTIONING*

CK Line Abrasive Cutters

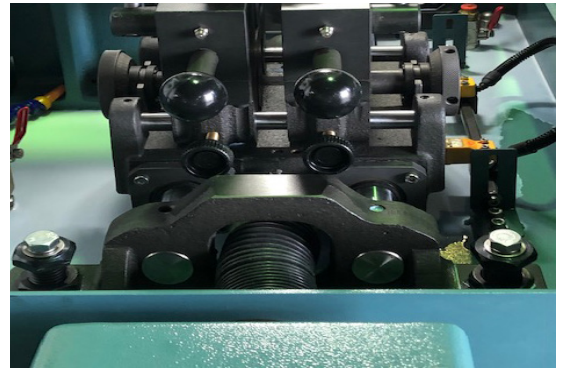


CK260A



CK260B

Our CK line of cutters is our most popular, offering a wide range of options, including strong motors, ease of operation and robust construction. All machines come complete and ready to work, including recirculating systems, a set of vises and cutoff wheels.



SPECIFICATIONS

MODEL NO.	CK 260	CK 360	CK 460
MOTOR POWER	3HP/5HP	5HP/7/5HP	10HP
MAX ROUND CUT	70MM/90MM	90MM/120MM	120MM
CUTOFF WHEEL	305MM	305MM/406MM	406MM
CUTTING DEPTH	260MM	360MM	460MM
WHEEL SPEED	2100RPM (50HZ)-2500RPM/960HZ		
POWER	220V/415V/440V-3PH		

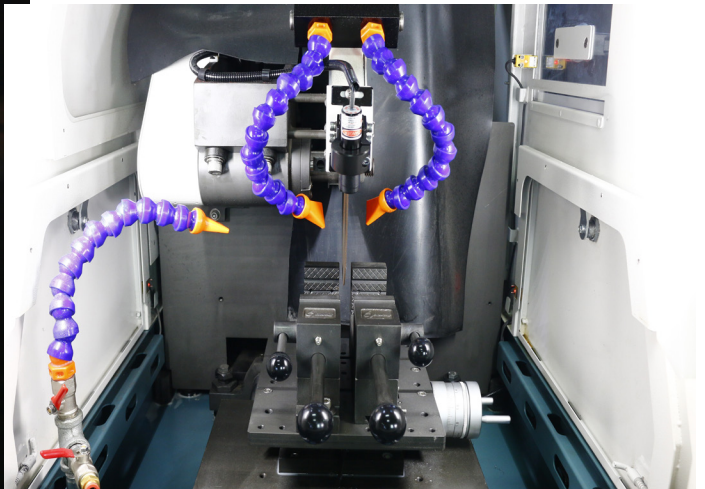


APPLICATION GUIDE-SECTIONING

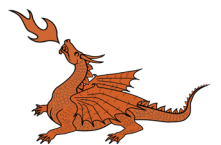
CF-250B

SPECIFICATIONS

MODEL NO. CF250-B	3hp and 5hp
MOTOR POWER	220V/415/4403PH
MAX ROUND CUT	70mm/90mm
CUTOFF WHEEL	305mm (12")
AXIS MOVEMENT	X & Z (Y Manual)
WHEEL SPEED	3,000 RPM
TRAVEL DISTANCE:	X 250mm Y 100mm Z 200mm



PRECISION SURFACES INTERNATIONAL, INC.



APPLICATION GUIDE-*SECTIONING*

CUTOFF WHEELS & COOLANT

10" x .075", Aluminum Oxide, RC 60+ PSI-110-10
10" x .075", Silicon Carbide, Hard NF PSI-111-10
10" x .075", Aluminim Oxide, RC 45+ PSI-112-10
10" x .075", Silicon Carbide, Medium NF PSI-113-10
10" x .032", Aluminum Oxide, Ultra Thin, Delicate PSI-114-10
10" x .075", Silicon Carbide, Soft NF PSI-115-10

12" x .093", Aluminum Oxide, RC 60+ PSI-110-12
12" x .105", Silicon Carbide, Hard NF PSI-111-12
12" x .093", Aluminim Oxide, RC 45+ PSI-112-12
12" x .105", Silicon Carbide, Medium NF PSI-113-12
12" x .045", Aluminum Oxide, Ultra Thin, Delicate PSI-114-12
12" x .105", Silicon Carbide, Soft NF PSI-115-12

14" x .093", Aluminum Oxide, RC 60+ PSI-110-14
14" x .105", Silicon Carbide, Hard NF PSI-111-14
14" x .093", Aluminim Oxide, RC 45+ PSI-112-14
14" x .105", Silicon Carbide, Medium NF PSI-113-14
14" x .105", Silicon Carbide, Soft NF PSI-115-14

Coolant/Rust inhibitor, Ferrous, 1 Quart PSI-166-1

Coolant/Rust Inhibitor, Ferrous, 1 Gallon PSI-166-4

Coolant/Rust Inhibitor, Non-Ferrous, 1 Quart PSI-167-1

Coolant/Rust Inhibitor, Non-Ferrous, 1 Gallon PSI-167-4

CONTACT US

Precision Surfaces International, Inc.
922 Ashland St.
Houston, TX 77008
P: (713) 426-2220
info@psidragon.com
www.psidragon.com

