

PRESIDON-ML Series Semi-Auto Mounting Press



ML-MAI Series

- Button-operated manual pressuring
- Hydraulic system with high stability
- Electric heating system for rapid heating
- Circulating cooling water significantly reduces water resource wastage
- High-strength thread-locking cover
- Suitable for preparing iron, brass, and other non-fragile materials with high temperature and high pressure resistance

*Perfect Surface.
Always*

Introduction & Features

Easy Operation

The machine operates in semi-automatic mode, automatically heating to the preset temperature. Users only need to manually add pressure and open the cooling water valve, making it easy to use.

Circulating Cooling Water

The built-in submerged pump socket allows for the external connection of a submerged pump, enabling operation in a circulating cooling mode. This significantly reduces water wastage, aligning with the goals of energy conservation and environmental protection.

Bracket for Handle Assembly

The handle assembly can be placed on the bracket, which is attached to the machine body, effectively increasing space utilization while keeping the workspace neat and eliminating concerns about the handle assembly falling and getting damaged.



Button-Operated Manual Pressuring

The intuitive button-operated manual pressuring design increases the flexibility of sample preparation, allowing adjustments according to different samples and requirements to achieve better preparation results.



Electric heating device and hydraulic design

An electric heating device increases the temperature quickly and stably, while a hydraulic pressure compensation design ensures stability as well.

Lower Ram with Chamfering Design

A chamfering design can avoid the waste or the damage of SiC paper or polishing cloth during the grinding and polishing process.



Introduction & Features

Thread-Locking Cover

The top cover adopts a thread-locking design, capable of withstanding greater force and pressure, enhancing its durability and resistance to deformation.



Spacer (option)

With an additional spacer, the user can mount two specimens at the same time, greatly reducing the sample preparation time.

Accessories

Submerged Pump

Order No.	Specification
QWP06002	1 ϕ -220V-50/60HZ
QWP06002-1	1 ϕ -200V-50/60HZ



Spacer(Option)

Size (mm)	Ordering No.	Size (mm)	Ordering No.
ϕ 25	ML25H0219A	ϕ 32	ML32H0219A
ϕ 25.4	ML25.4H0219A	ϕ 38.1	ML38.1H0219A
ϕ 30	ML30H0219A	ϕ 40	ML40H0219A
ϕ 31.75	ML31.75H0219A	ϕ 50	ML50H0219A



TOP TECH

Working Table (Option)



Ordering No.

TF01

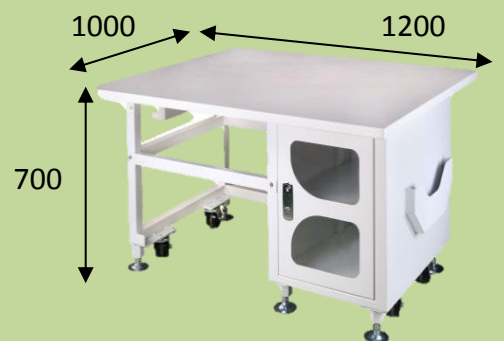
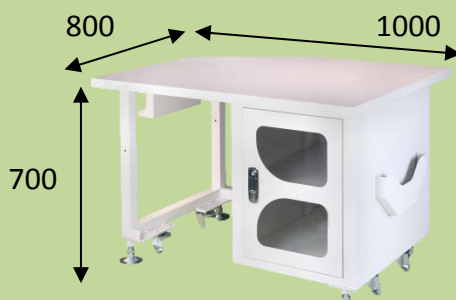
TF02

Size (L*D*H)

1000*800*700 mm

1200*1000*700 mm

Sample



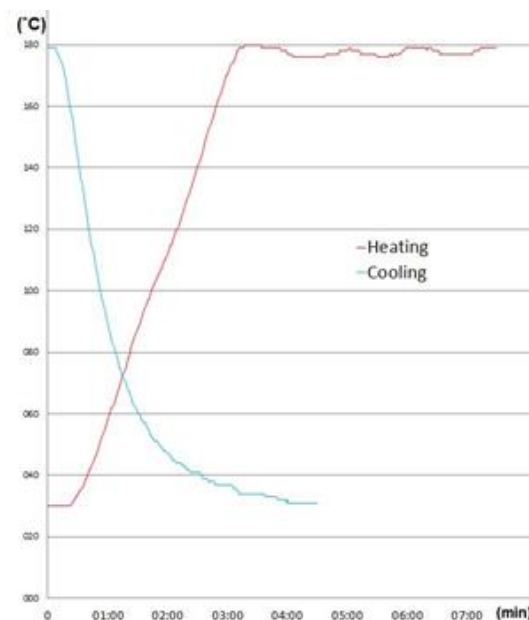
(mm)



Specifications

Model	MA							
Sample Size (mm)	Ø25	Ø25.4	Ø30	Ø31.75	Ø32	Ø38.1	Ø40	Ø50
Sample Quantity	1~2pcs/per time (Opt for a spacer for 2 pcs)							
Spacer (Option)	Ø25 (ML25H0219A)		Ø31.75 (ML31.75H0219A)		Ø40 (ML40H0219A)			Ø50 (ML50H0219A)
	Ø25.4 (ML25.4H0219A)		Ø32 (ML32H0219A)					
	Ø30 (ML30H0219A)		Ø38.1 (ML38.1H0219A)					
Noise Level (dB)	62~73					63~75		
Temperature (°C)	0~250 (Special temperature requirements can be customized)							
Heating Power (W)	1600					2400		
Total Power (W)	2220					3020		
Pressure (kg/cm ²)	Manual pressuring 80~600 (1137~8534 psi/ 78~588 bar) (The actual pressure will be affected by the size of the mounting tube and the material of the powder.)							
Heating Time (s)	99 min 59 sec							
Cooling Time (s)	Manual cooling after heating							
Machine Dimension WxDxH (mm)	500x600x640							
Machine Weight (kg)	70					71		
Inlet and Outlet Pipe	10mm low pressure pipe (Inlet Ø10— Outlet Ø15)							
Cooling Device	Connect to submerged pump for manual cooling							
Power Supply (V)	AC 220 1Ø							
Accessories	Sample Clip 1pc, Funnel 1pc, Spoon 1pc, Mounting Powder 1kg (2.2lb), Submerged Pump 1set, Pipe Clip 4pcs, Copper Connector 1pc							

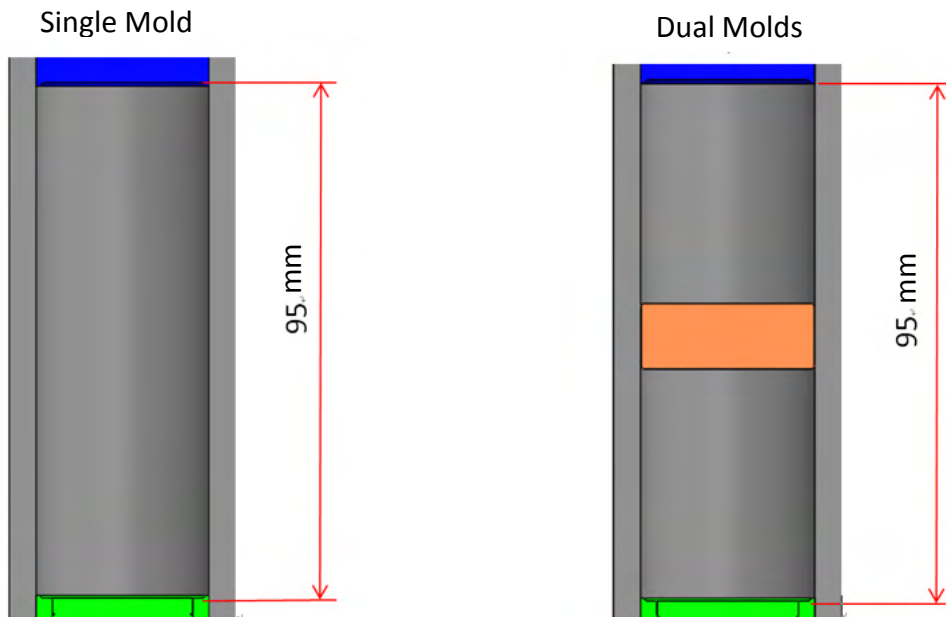
Heating/cooling graph



1. Sample-Ø32mmx20mm (t).
2. Testing results will be different according to weather condition, materials, sample sizes, and cylinder sizes.
(The data is for referencing only)

Parameters

Sample Size (Phonetic Formaldehyde Resin)



	Mounting Size (mm)	Mold Volume (mm ³)	Max. height (mm)	Powder Weight (g)
Single mold	Ø25	21598	44	31
	Ø25.4	22295	44	32
	Ø30	31102	44	44
	Ø31.75	34836	44	49
	Ø32	35387	44	50
	Ø38.1	50164	44	71
	Ø40	55292	44	78
	Ø50	86394	44	122
Dual molds	Ø25	8590	17.5	12
	Ø25.4	8867	17.5	13
	Ø30	12370	17.5	18
	Ø31.75	13855	17.5	20
	Ø32	14074	17.5	20
	Ø38.1	19952	17.5	28
	Ø40	21991	17.5	31
	Ø50	34361	17.5	48

Consumables (Option)



Acrylic Powder

Order No. Thermoplastic, High Transparent and Easy to Observe.
(30g per time)

S030202-1	1 kg
S030202-5	5 kg
S030202-10	10kg

Bakelite Powder (Phenolic Formaldehyde Resin)

Order No. Thermosetting and High hardness.
(30g per time)

S03001-1	Black	1 kg
S03001	Black	25 kg
S03002-1	Brown	1 kg
S03002	Brown	25 kg
S03003-1	Green	1 kg
S03003	Green	25 kg
S03004-1	Red	1 kg
S03004	Red	25 kg

Conductive Bakelite Powder

Order No Thermosetting, and Phenolic formaldehyde resin.
(30g per time)

S030106	Carbon-based	0.45kg
S0301061	Copper-based	0.45kg

Order No.	Specimen Clip	Package (pcs/pack)
S17003	Stainless clip for metal specimen. Able to be employed with hot mounting machines. Size Ø10 x 7 H (mm)	100

Top Tech Distributors



TOP TECH



TOP TECH MACHINES CO.,LTD

No.6-3,Siyuan Rd.,Dali,Taichung,412 Taiwan

Tel +886-4-2406-3799 Fax:+886-4-2406-0960

E-mail: top@toptech.tw <http://www.toptech.tw>

Agent

Top Tech reserves the right to change our products without notice.

EB3-BM01